



ART SG

19 - 21 JAN 2024
MARINA BAY SANDS
SINGAPORE



FOUNDING AND
LEAD PARTNER



Booth | BB17

Brian Harte

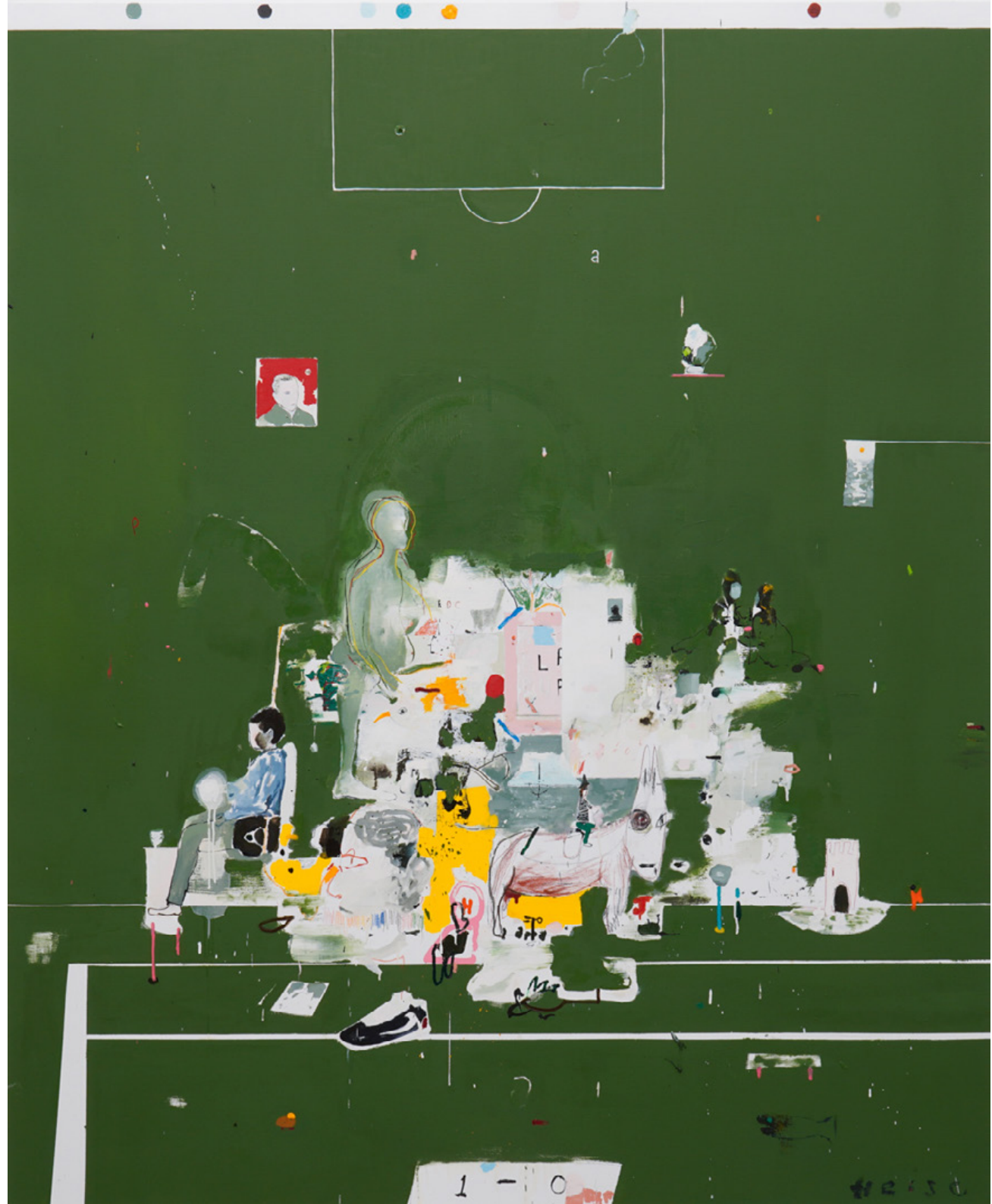
Tammi Campbell

Miya Ando

Asami Kiyokawa

Keisuke Tada

MAKI Gallery





Brian Harte



MAKI Gallery

Brian Harte

1-love, (Tennis Version)

2022

Oil, acrylic, and pastel on linen

220.0 x 180.0 cm

Signed, titled and dated on the reverse





Tammi Campbell

MAKI Gallery

Tammi Campbell

***Campbell's Soup Can Framed (Cream of Vegetable)
with Polyethylene Sheeting and Packing Tape***

2021

Acrylic on canvas with wood frame

53.5 x 43.2 cm



MAKI Gallery



Tammi Campbell

***Campbell's Soup Can Framed (Green Pea)
with Polyethylene Sheeting and Packing Tape***

2021

Acrylic on canvas with wood frame

53.5 x 43.2 cm

MAKI Gallery



Tammi Campbell

Campbell's Soup Can (Split Pea with Ham)

Framed with Polyethylene Sheeting and Packing Tape

2021

Acrylic on canvas with wood frame

53.5 x 43.2 cm

MAKI Gallery

Tammi Campbell

Campbell's Soup Can (Vegetable Beef)

Framed with Polyethylene Sheeting and Packing Tape

2021

Acrylic on canvas with wood frame

53.5 x 43.2 cm



MAKI Gallery

Tammi Campbell

Campbell's Soup Can (Bean with Bacon)

Framed with Polyethylene Sheeting and Packing Tape

2021

Acrylic on canvas with wood frame

53.5 x 43.2 cm



MAKI Gallery

Tammi Campbell

Campbell's Soup Can (Old Fashioned Tomato Rice)
Framed with Polyethylene Sheeting and Packing Tape

2021

Acrylic on canvas with wood frame

53.5 x 43.2 cm



MAKI Gallery



Tammi Campbell

Campbell's Soup Can (Black Bean)

Framed with Polyethylene Sheeting and Packing Tape

2021

Acrylic on canvas with wood frame

53.5 x 43.2 cm

MAKI Gallery

Tammi Campbell

Campbell's Soup Can (Turkey Noodle)

Framed with Polyethylene Sheeting and Packing Tape

2021

Acrylic on canvas with wood frame

53.5 x 43.2 cm



The image shows a wide, flat landscape with a complex, crystalline texture, likely a salt flat or a desert. The ground is covered in various shades of light brown, tan, and white, with darker, more irregular patches scattered throughout. The overall appearance is that of a vast, open, and somewhat desolate environment. In the center of the image, the name "Miya Ando" is written in a clean, white, sans-serif font. The text is centered both horizontally and vertically, standing out clearly against the textured background.

Miya Ando

MAKI Gallery



Miya Ando

Kumo (Cloud) January 9 2021 7:54 AM NYC

2021

Ink on aluminum composite

64.8 x 78.7 cm

Signed and titled on the reverse

MAKI Gallery

Miya Ando

Kumo (Cloud) January 6 2021 2:00 PM NYC

2021

Ink on aluminum composite

64.8 x 78.7 cm

Signed and titled on the reverse



MAKI Gallery

Miya Ando

Buon (Twilight Clouds)

September 4 2021 Sunset 7:22 PM

2021

Ink on aluminum composite

94.6 x 94.6 cm

Signed, titled and dated on the reverse



MAKI Gallery

Asami Kiyokawa
Tokyo reflection

2023

Mixed media

149.7 x 106.0 cm



MAKI Gallery



Asami Kiyokawa

No.162

2023

Mixed media

36.1 x 29.2 x 2.8 cm

MAKI Gallery



06²⁰⁰⁵
STREET
No.166
700yen
style
from
London
New York

Asami Kiyokawa

No.166

2023

Mixed media

36.1 x 29.2 x 2.8 cm



01²⁰⁰⁶
STREET
No.173
700^{en}
style
from
Paris
Collections
London
Collections

Asami Kiyokawa

No.173

2023

Mixed media

36.1 x 29.2 x 2.8 cm



Keisuke Tada

MAKI Gallery



Keisuke Tada

Painting of incomplete remains #90

2023

Oil, acrylic, and pigment on canvas

12.0 x 9.0 x 5.0 cm

Signed and dated on the reverse

MAKI Gallery



Keisuke Tada

Painting of incomplete remains #93

2023

Oil, acrylic, and pigment on canvas

10.2 x 10.2 x 4.8 cm

Signed and dated on the reverse

MAKI Gallery



Keisuke Tada

Painting of incomplete remains #104

2023

Oil, acrylic, and pigment on canvas

8.1 x 8.1 x 5.0 cm

Signed and dated on the reverse

MAKI Gallery



Keisuke Tada

Painting of incomplete remains #122

2023

Oil, acrylic, and pigment on canvas

9.2 x 12.1 x 5.0 cm

Signed and dated on the reverse

MAKI Gallery

Keisuke Tada

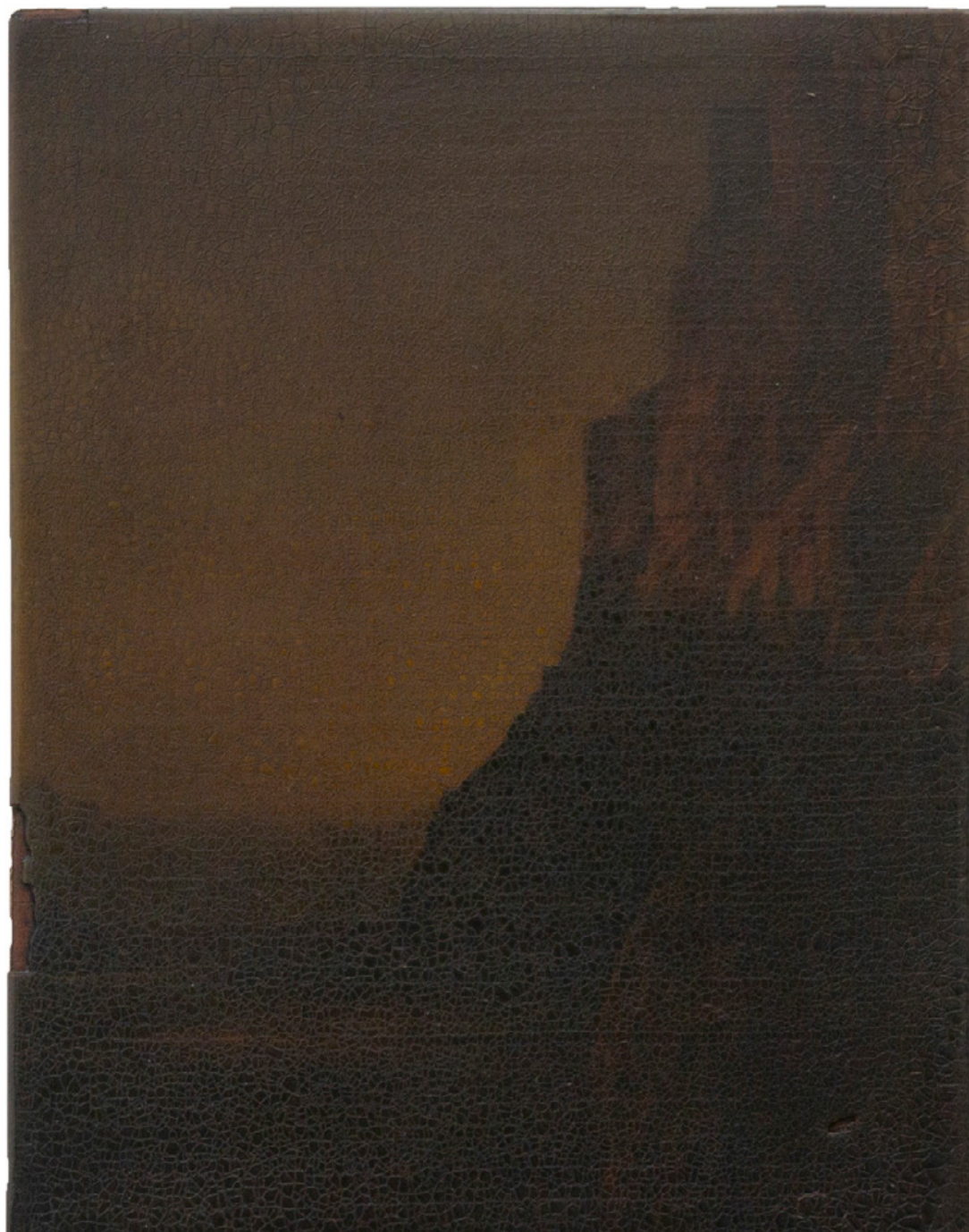
Painting of incomplete remains #127

2023

Oil, acrylic, and pigment on canvas

18.6 x 14.4 x 5.0 cm

Signed and dated on the reverse



MAKI Gallery



Keisuke Tada

Painting of incomplete remains #129

2023

Oil, acrylic, and pigment on canvas

8.2 x 11.1 x 5.0 cm

Signed and dated on the reverse

MAKI Gallery

Keisuke Tada

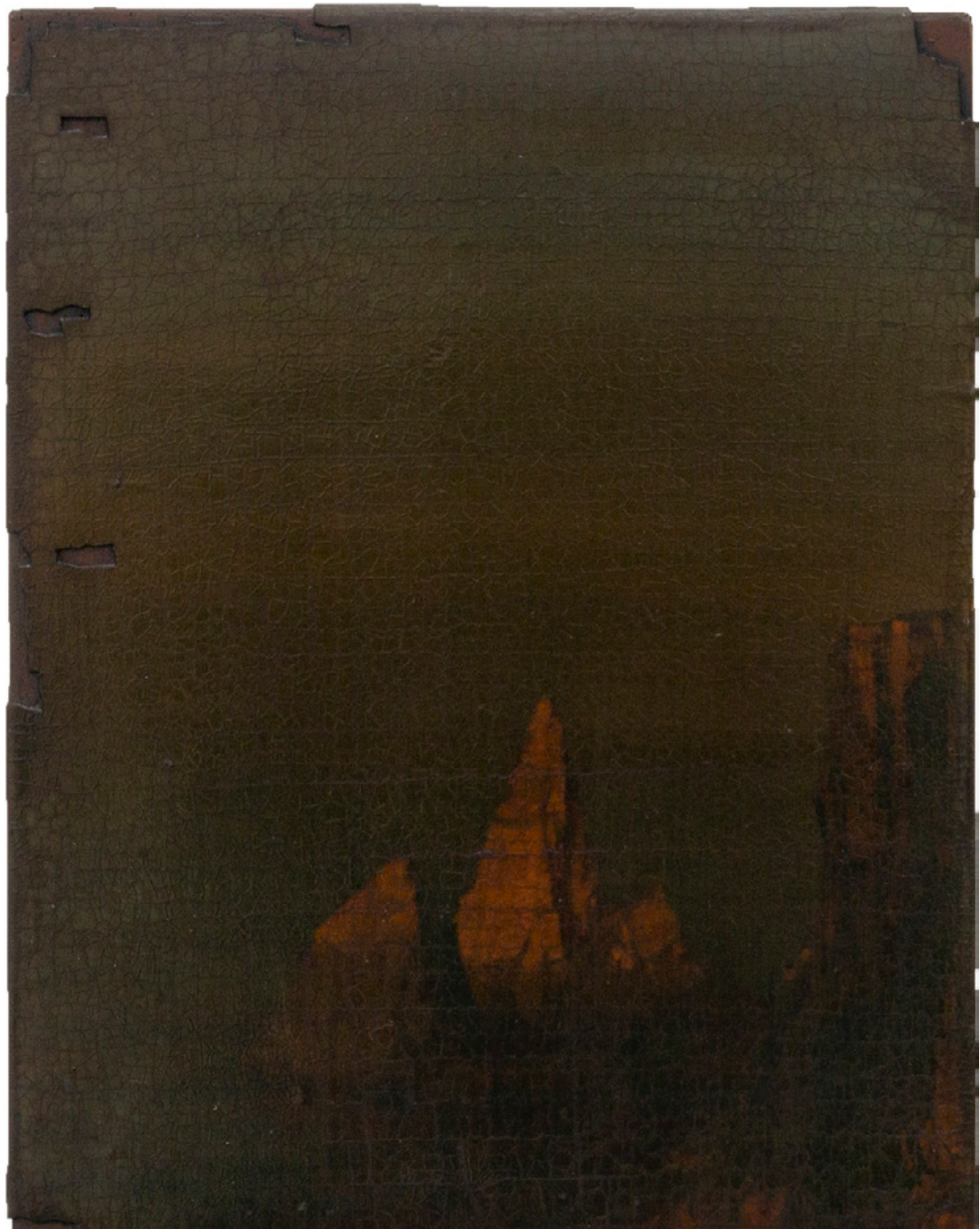
Painting of incomplete remains #143

2023

Oil, acrylic, and pigment on canvas

18.6 x 14.4 x 5.0 cm

Signed and dated on the reverse



MAKI Gallery



Keisuke Tada

Painting of incomplete remains #160

2023

Oil, acrylic, and pigment on canvas

5.2 x 6.2 x 5.0 cm

Signed and dated on the reverse

MAKI Gallery



Keisuke Tada

Painting of incomplete remains #161

2023

Oil, acrylic, and pigment on canvas

6.2 x 5.2 x 5.0 cm

Signed and dated on the reverse

MAKI Gallery



Keisuke Tada

Painting of incomplete remains #171

2023

Oil, acrylic, and pigment on canvas

12.1 x 9.1 x 5.0 cm

Signed and dated on the reverse

MAKI Gallery



Keisuke Tada

Painting of incomplete remains #177

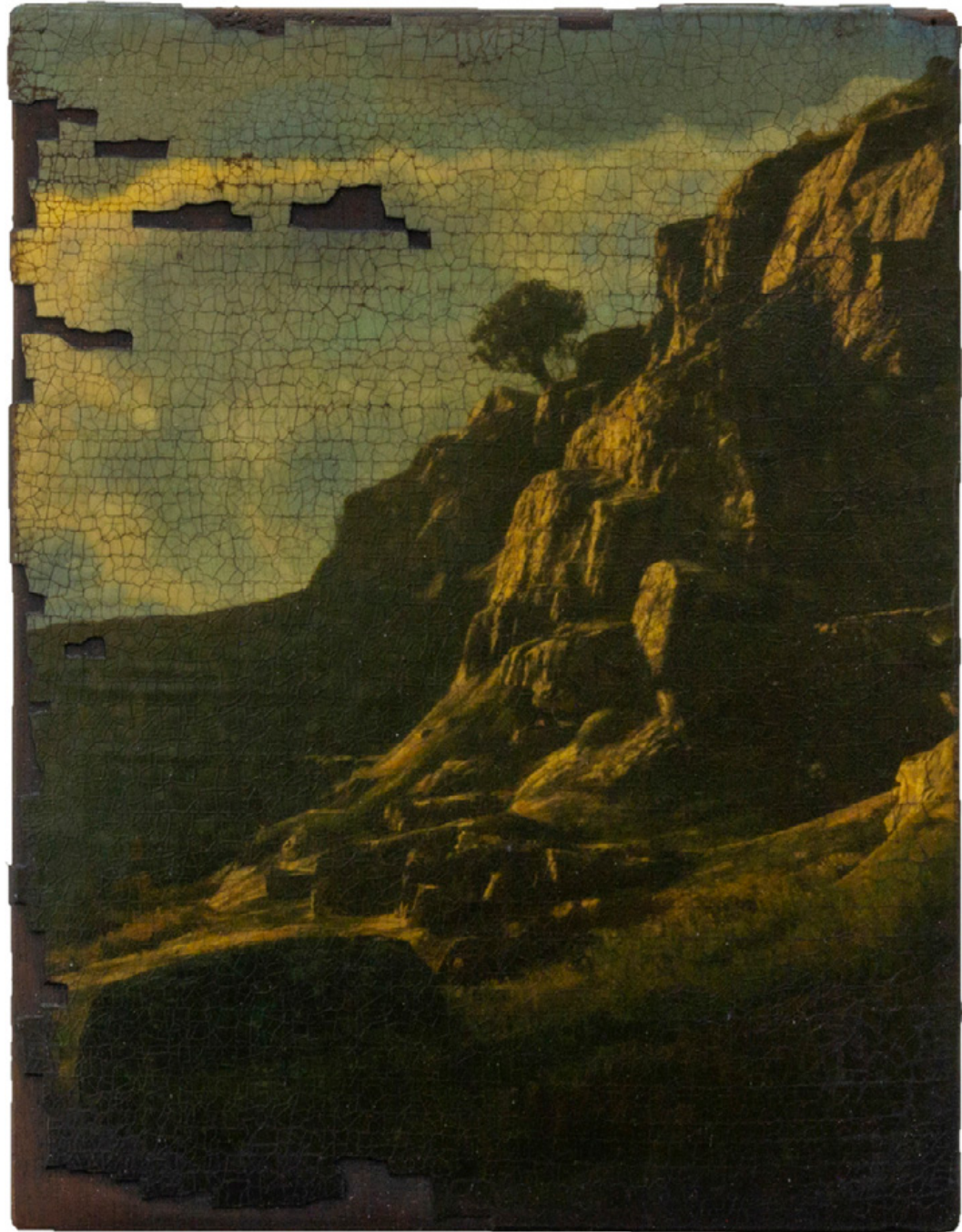
2023

Oil, acrylic, and pigment on canvas

11.1 x 8.0 x 5.0 cm

Signed and dated on the reverse

MAKI Gallery



Keisuke Tada

Painting of incomplete remains #135

2023

Oil, acrylic, and pigment on canvas

18.6 x 14.4 x 5.0 cm

Signed and dated on the reverse

MAKI Gallery
—

4-11-11 Jingumae Shibuya-ku Tokyo, 150-0001 | Tel: +81 (0)3 6434 7705 |
www.MAKIGallery.com | info@MAKIGallery.com